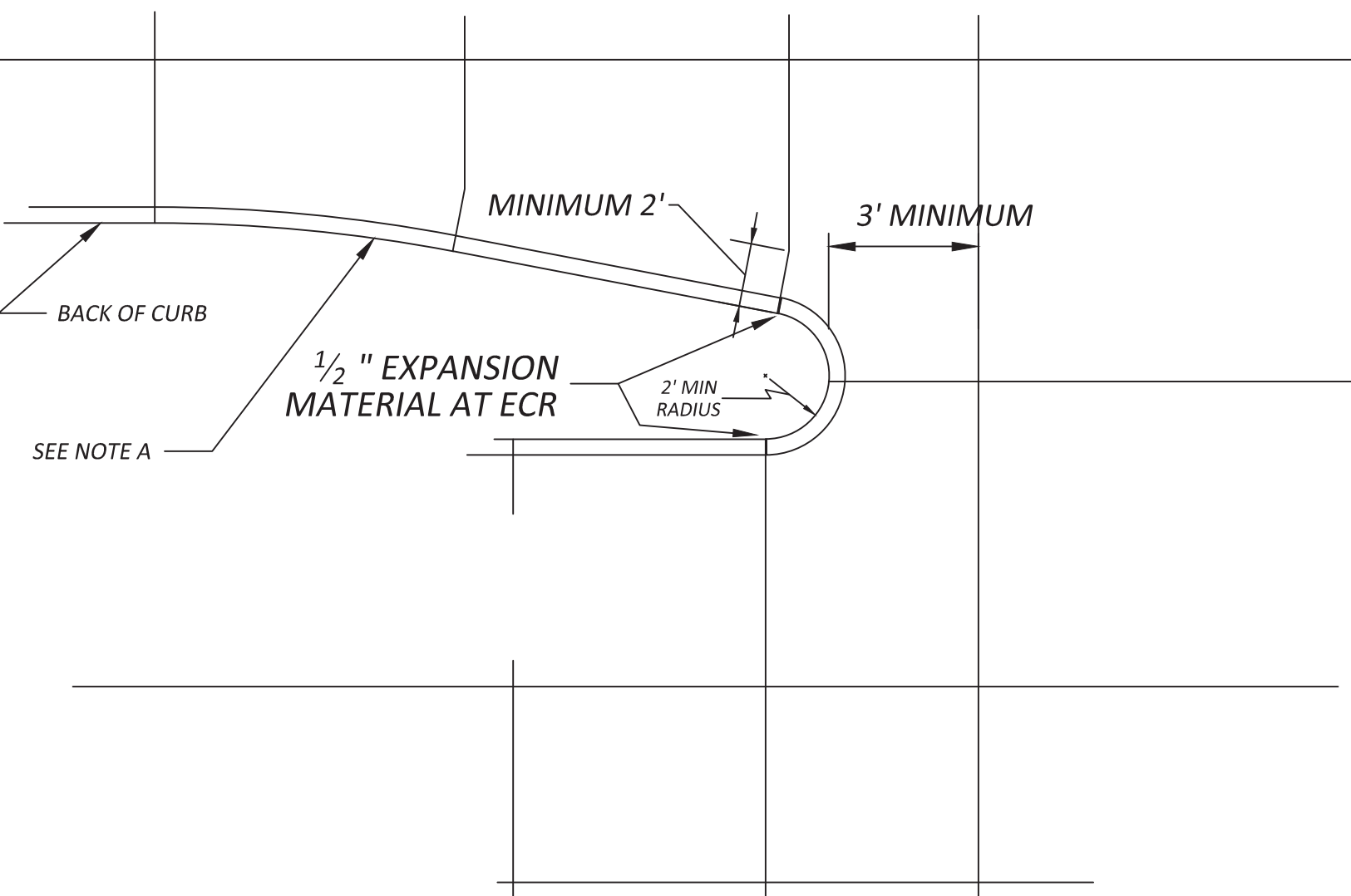
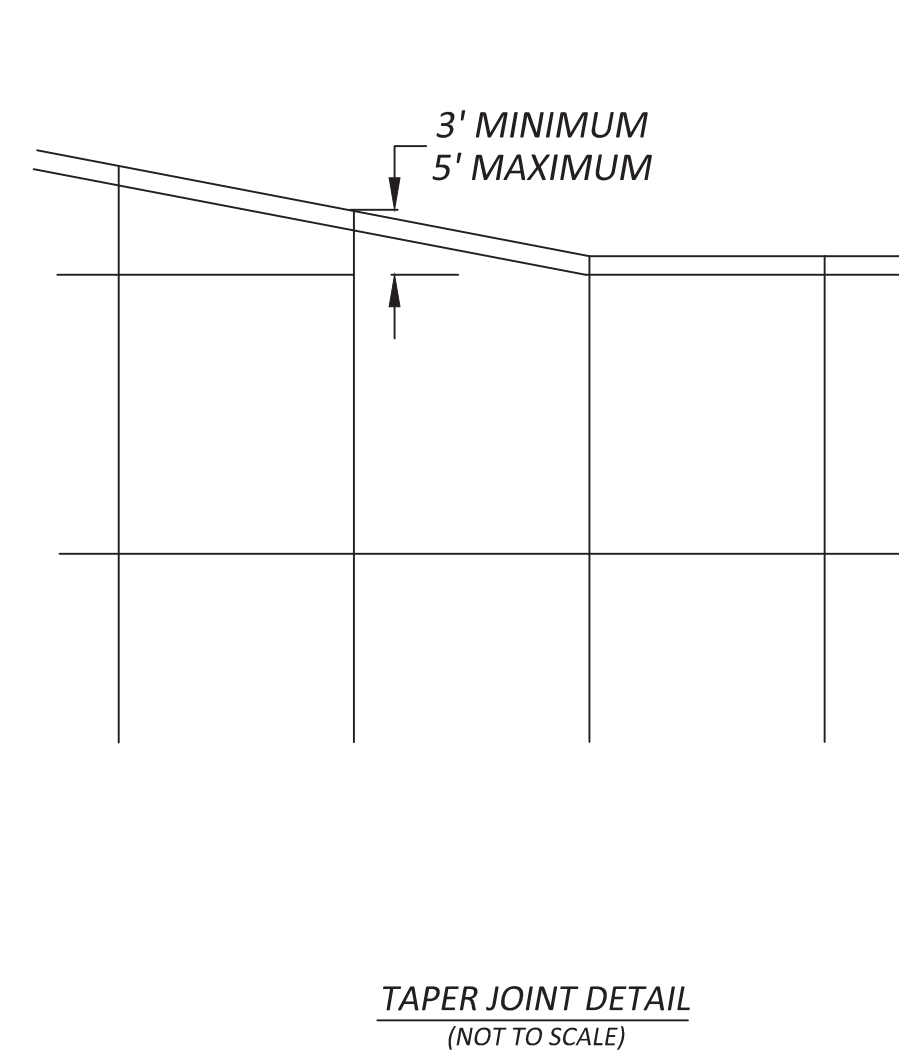
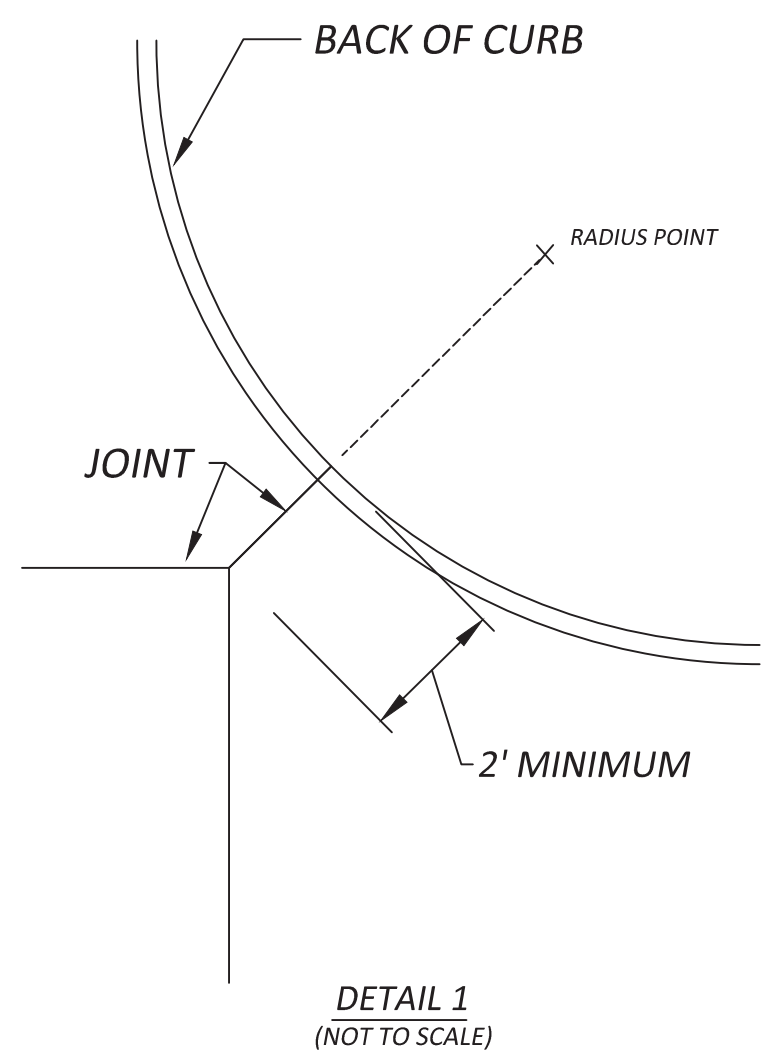
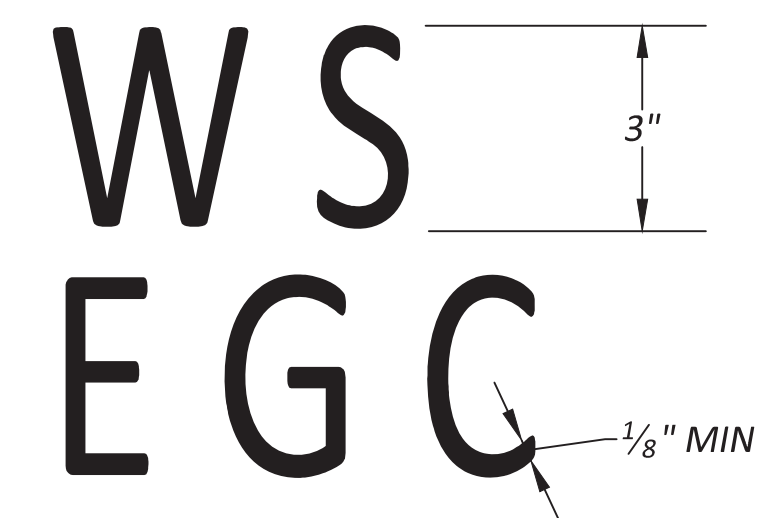


TYPICAL LAYOUT FOR PORTLAND CEMENT CONCRETE PAVEMENT (NOT TO SCALE)



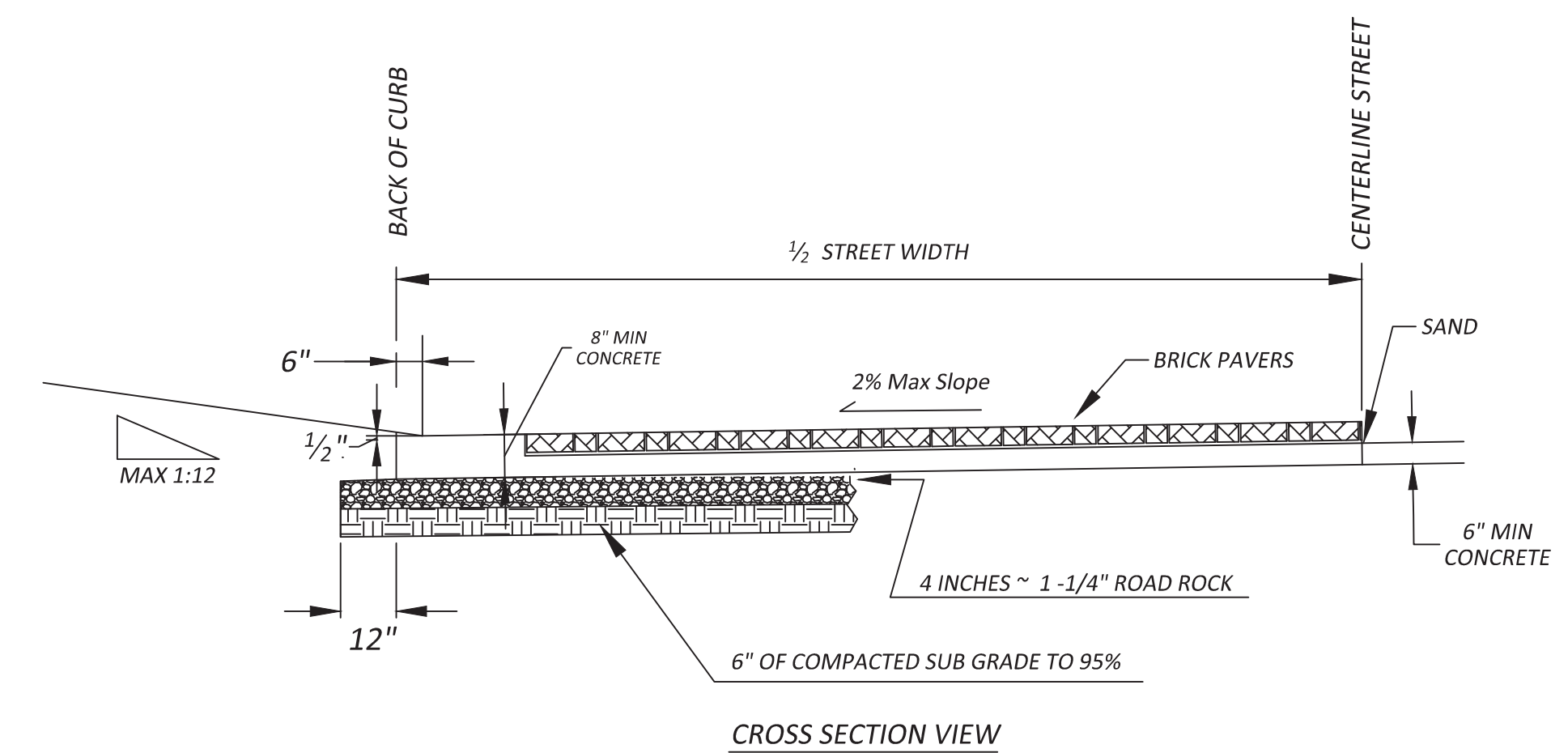
Note A: IF MEDIAN IS CAPPED WITH IMPERVIOUS SURFACE INSTALL 1/2" EXPANSION MATERIAL AT BACK OF CURB

TYPICAL LAYOUT FOR MEDIAN NOSE (NOT TO SCALE)

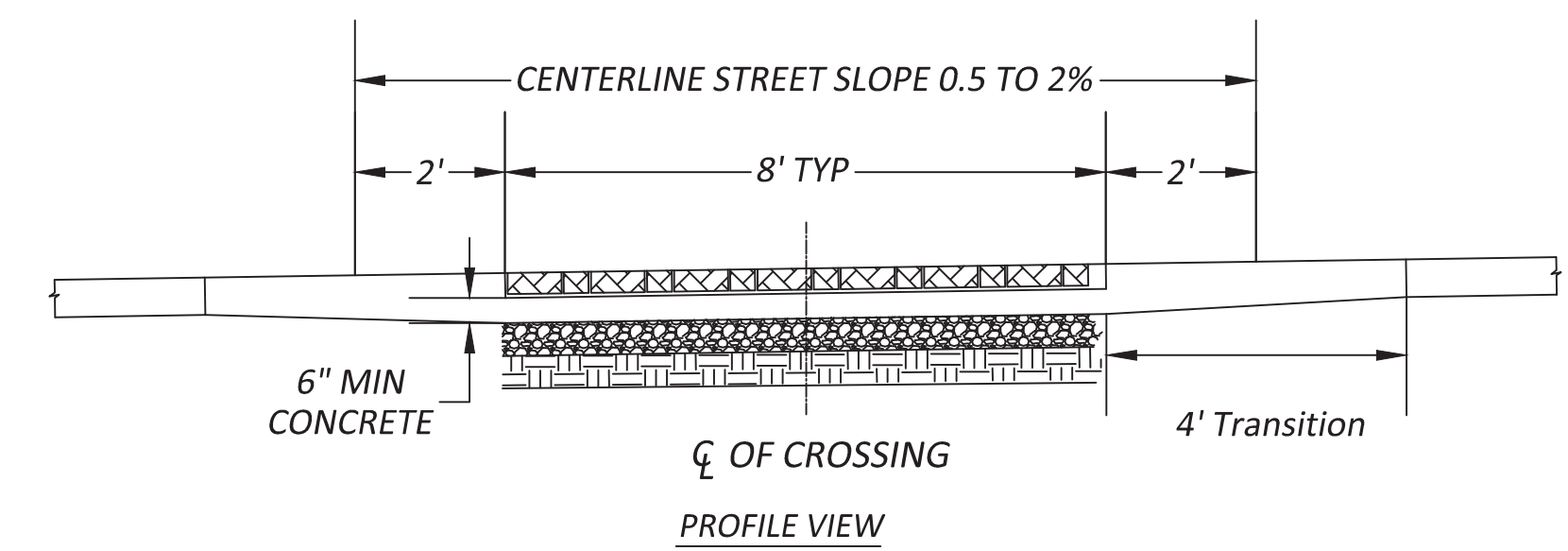


- NOTES:
1. ALL UTILITY CROSSING SHALL BE MARKED ON THE FACE OF THE CURB USING A STAMP
 2. THE UTILITIES SHALL BE MARKED DIRECTLY OVER THE PATH OF THE UTILITY.
 3. A STAMP SHALL MARK ONLY ONE INDIVIDUAL UTILITY CROSSING.
- UTILITIES SHALL BE MARKED AS FOLLOWS:
- "W" - WATER MAIN, SERVICE AND IRRIGATION CROSSINGS OR CONDUIT
 - "S" - SANITARY MAIN AND SERVICE CROSSINGS
 - "E" - ELECTRICAL CONDUIT CROSSINGS
 - "G" - GAS CONDUIT CROSSING
 - "C" - ALL OTHER CONDUITS INCLUDING BUT NOT LIMITED TO TELEPHONE AND CABLE TV

UTILITY CROSSING MARKER STAMPS (NOT TO SCALE)



CROSS SECTION VIEW



PROFILE VIEW

TYPICAL LAYOUT BRICK PAVER STREET CROSSING (NOT TO SCALE)

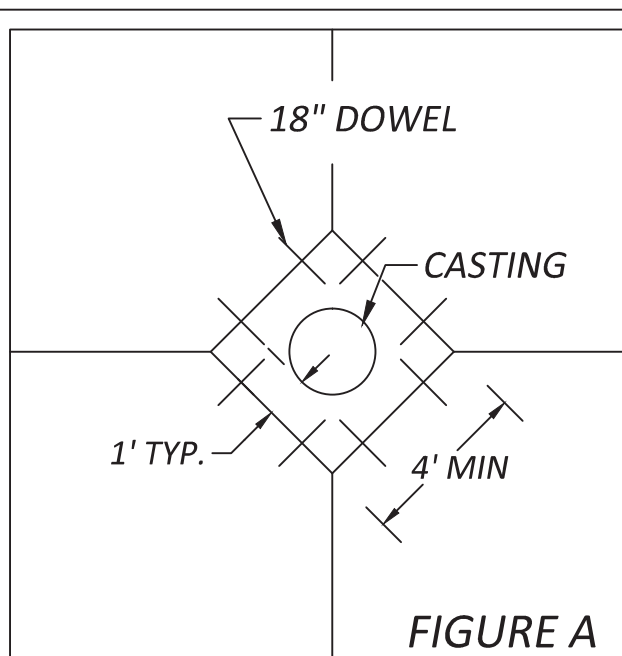


FIGURE A

- NOTES:
1. USE DIAMOND BLOCK OUT WHEN JOINT INTERSECTS CASTING FROM TWO DIRECTIONS AS SHOWN IN FIGURE A
 2. MOVE JOINTS TO INTERSECT CASTING IF POSSIBLE WHILE MAINTAINING A MINIMUM PANEL LENGTH TO WIDTH RATIO OF 1.5
 3. CASTING TO EDGE OF BLOCK OUT SHALL BE A MINIMUM OF 1 FOOT
 4. IF JOINT CAN NOT BE MOVED AND "A" IS LESS THEN 2 FEET DIVERT JOINT AS SHOWN IN FIGURE B
 5. DOWELS USED SHALL BE DEFORMED, 18" LONG AND THE SAME DIAMETER AS ADJACENT JOINT DOWELS

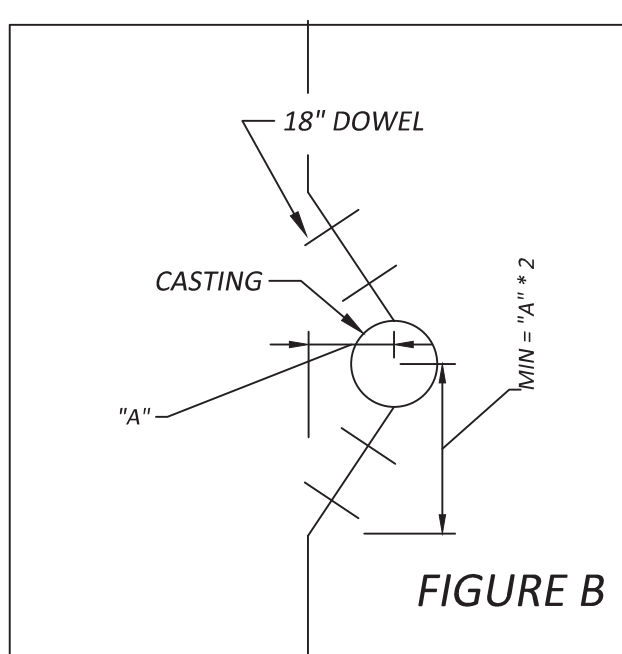


FIGURE B

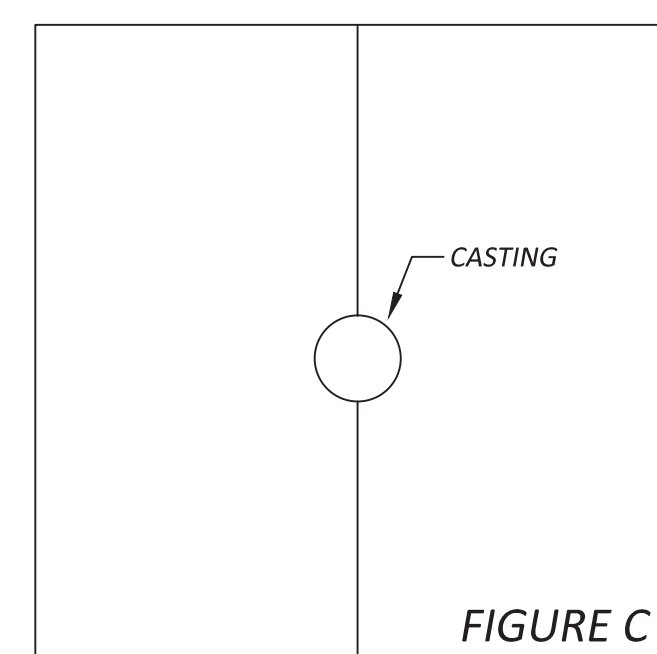
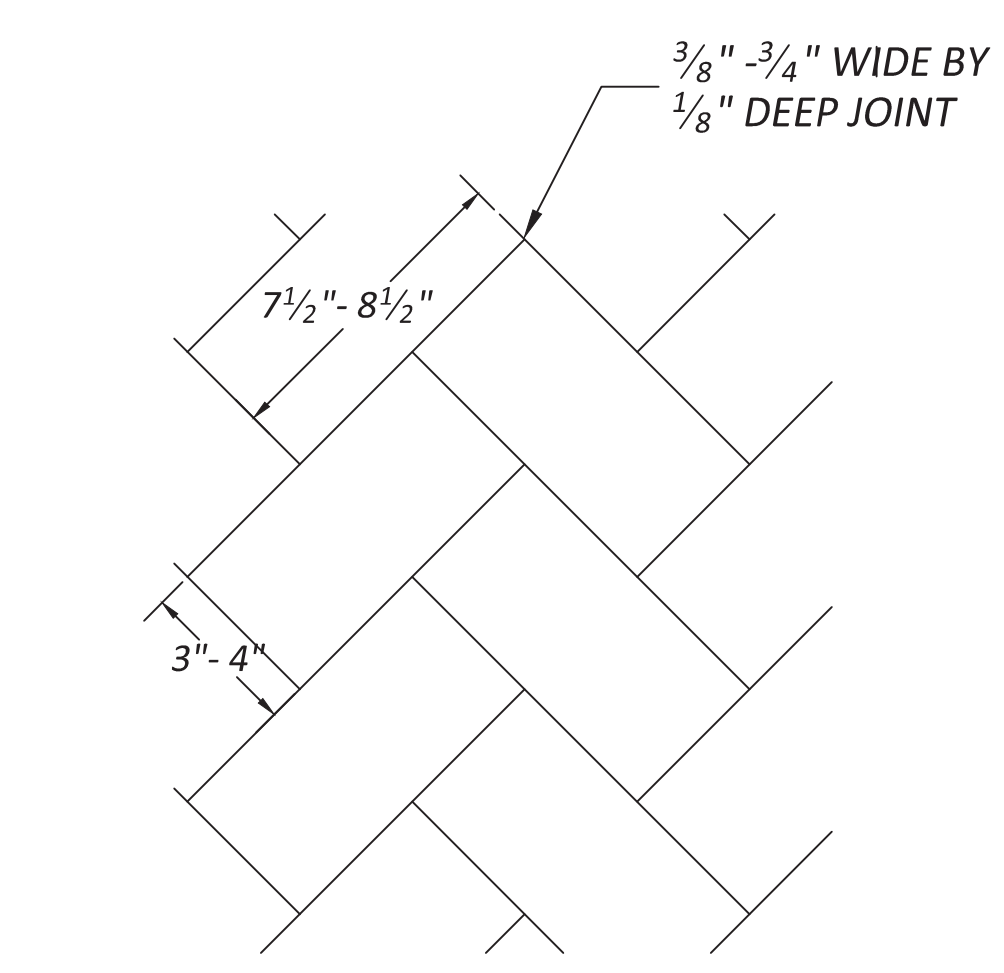


FIGURE C

TYPICAL LAYOUT FOR CASTINGS IN PAVEMENT (NOT TO SCALE)



HERRINGBONE TYPICAL LAYOUT FOR CONCRETE STAMPING IN PAVEMENT (NOT TO SCALE)

NO.	DATE	DESCRIPTION	BY
<p>City of Manhattan Kansas</p> <p>PUBLIC WORKS 1101 POYNTZ AVE., MANHATTAN, KS 66502 (785) 587-2415</p>			
<p>MANHATTAN STANDARD DETAILS MSD 2630 STREET JOINTING & MISC</p>			
CITY ENGINEER: BRIAN JOHNSON, P.E.		DESIGN BY:	
CITY PROJ. #:		DATE:	
DRAWN BY:		PAGE OF	

