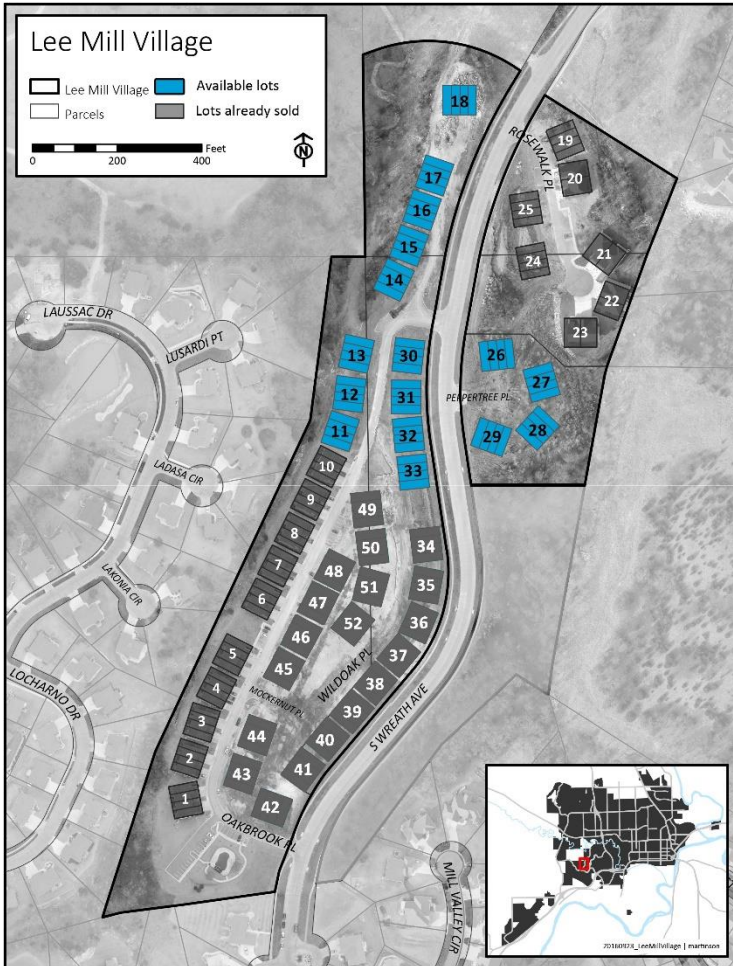


LEE MILL VILLAGE DEVELOPMENT

CONTACT: City Manager's Office . Jason Hilgers . Deputy City Manager
 785.587.2404 . hilgers@cityofmhk.com
 1101 Poyntz Avenue Manhattan, KS 66502
www.cityofmhk.com/LMV



Lot Details



SITE DESCRIPTION

Individual Lot Area	.12 Acres
Maximum Units Allowed	4

ZONING: Residential PUD

Potential Uses	Single Family/ Duplex/Townhome
Within City Limits	Manhattan
Additional Zoning Overlay	Airport Overlay

PROPERTY AND AREA DESCRIPTION

Building Height Restrictions	50'
Max Lot Coverage Allowed	40%

INFRASTRUCTURE

Electrical	Westar Energy
Natural Gas	Kansas Gas Service
Water	City of Manhattan, 8" Main
Sewer	City of Manhattan, 8" Main

TAX INFORMATION

Annual Lot Specials	\$3,189/Year (Exp. 2028)
----------------------------	--------------------------

ADDITIONAL RESOURCES

[Lee Mill Village Plat](#)
[Ordinance No. 7440 - Amending LMV PUD](#)

[Lee Mill Village Covenants](#)
[2007 City Commission Annex/Rezone Memo](#)